

Note: Alternative Routes D and E were selected as the Proposed Routes for the Joshua Falls – Riverville – Gladstone 138 kV Transmission Line Component of the Project.

- Alternative Routes
- High Probability Stream
- Road/Highway
- Stream (NHD)
- Wetland Probability - LOW
- 100-year Floodplain
- Right-of-Way (100')
- Map Tile
- Hydric Inclusion Soils
- Index Contour
- Intermediate Contour



Desktop Wetland and Stream Delineation
 Component 1: Joshua Falls-Riverville
 138 kV Transmission Line

APALACHIAN POWER
 #GOINGLESS THE FIGHT

Date: 12/22/2020
 Imagery Layer Credit: [Mapbox](#)
 Project: 15.5303.133521

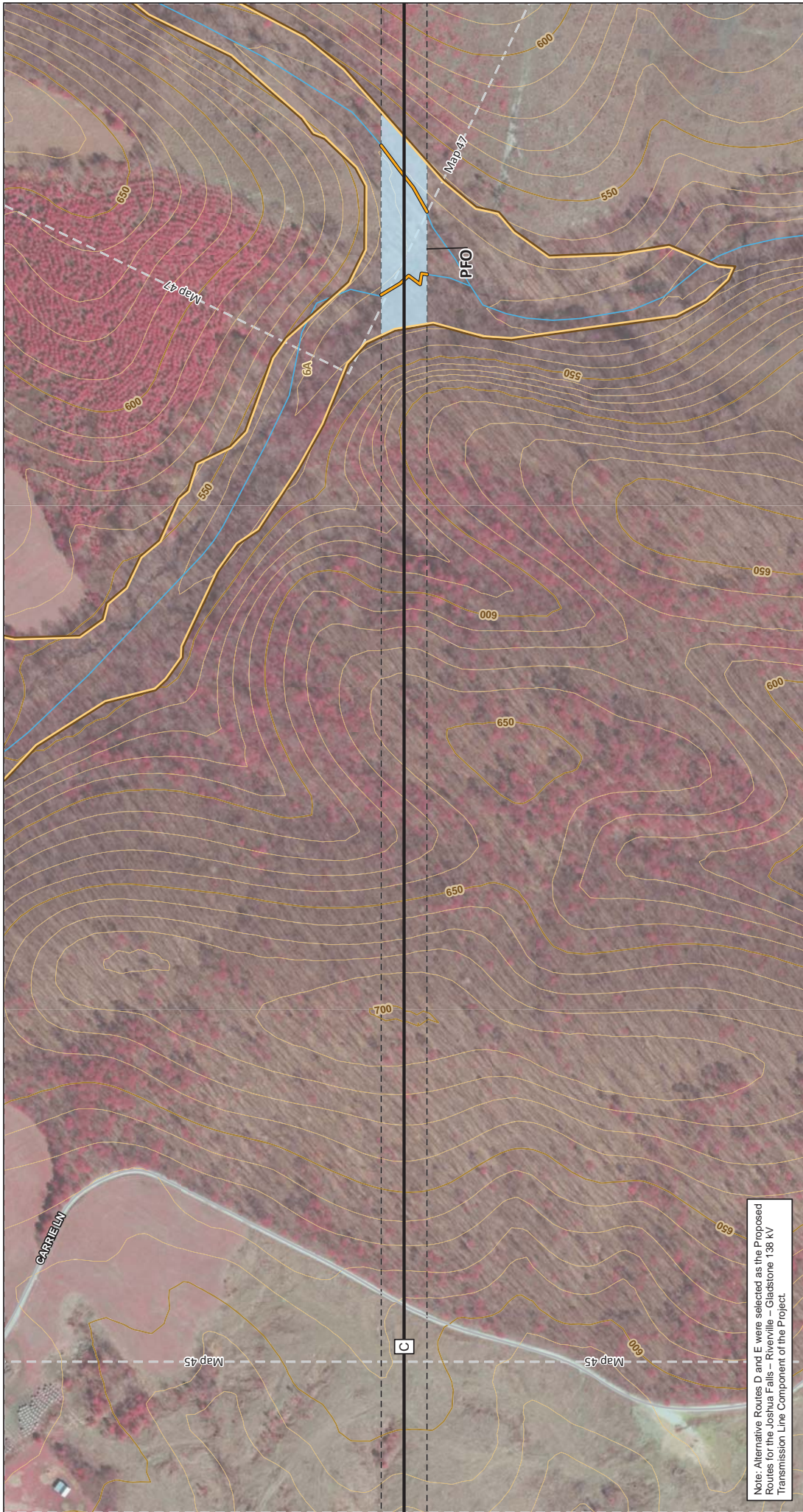
WAD 1983 StatePlane Virginia South FIPS 4502 Feet
 Lambert Conformal Conic
 North American 1983

Amherst, Appomattox, Campbell, & Nelson Counties, Virginia

Map 45 of 53

1" = 200'

0 100 200 400 Feet



Desktop Wetland and Stream Delineation
 Component 1: Joshua Falls-Riverville
 138 kV Transmission Line

APPALACHIAN POWER
 #GOINGLESSISFINEGP™

Date: 12/22/2020
 Imagery Layer Credit: Google Earth Pro
 Project: 15-1500_138K21

Map 46 of 53

1" = 200'

0 100 200 400 Feet

Amherst, Appomattox, Campbell, & Nelson Counties, Virginia

NAD 1983 StatePlane Virginia South FIPS 4502 Feet
 Lambert Conformal Conic
 North American 1983

Legend

- Alternative Routes
- Stream (NHD)
- Map Tile
- High Probability Stream
- Wetland Probability - LOW
- Hydric Inclusion Soils
- Road/Highway
- Right-of-Way (100')
- Index Contour
- Intermediate Contour



Note: Alternative Routes D and E were selected as the Proposed Routes for the Joshua Falls - Riverville - Gladstone 138 kV Transmission Line Component of the Project.



Note: Alternative Routes D and E were selected as the Proposed Routes for the Joshua Falls - Riverville - Gladstone 138 kV Transmission Line Component of the Project.

Desktop Wetland and Stream Delineation
 Component 1: Joshua Falls-Riverville
 138 kV Transmission Line

APALACHIAN POWER
 #GOINGLESS THE WAY

Date: 12/20/2020
 Imagery Layer Credit: Aerial Imagery
 Project: 15 5303_135521

North Arrow

NAD 1983 StatePlane Virginia South FIPS 4502 Feet
 Lambert Conformal Conic
 North American 1983

Amherst, Appomattox, Campbell, & Nelson Counties, Virginia

0 100 200 400
 Feet

1" = 200' Map 47 of 53

Legend

- Alternative Routes
- High Probability Stream
- Stream (NHD)
- Wetland Probability - LOW
- Wetlands (NW1)
- Right-of-Way (100')
- Map Tile
- Hydric Inclusion Soils
- Index Contour
- Intermediate Contour





Desktop Wetland and Stream Delineation
 Component 1: Joshua Falls-Riverville
 138 kV Transmission Line

Date: 12/22/2020
 Imagery Layer Credit: [Mapbox](#)
 Project: 15 5303_135921

APPALACHIAN POWER
 #GOINGLESSISMORE
 #APPPOWER

North Arrow

NAD 1983 StatePlane Virginia South FIPS 4502 Feet
 Lambert Conformal Conic
 North American 1983

Amherst, Appomattox, Campbell, & Nelson Counties, Virginia

0 100 200 400
 Feet

1" = 200'

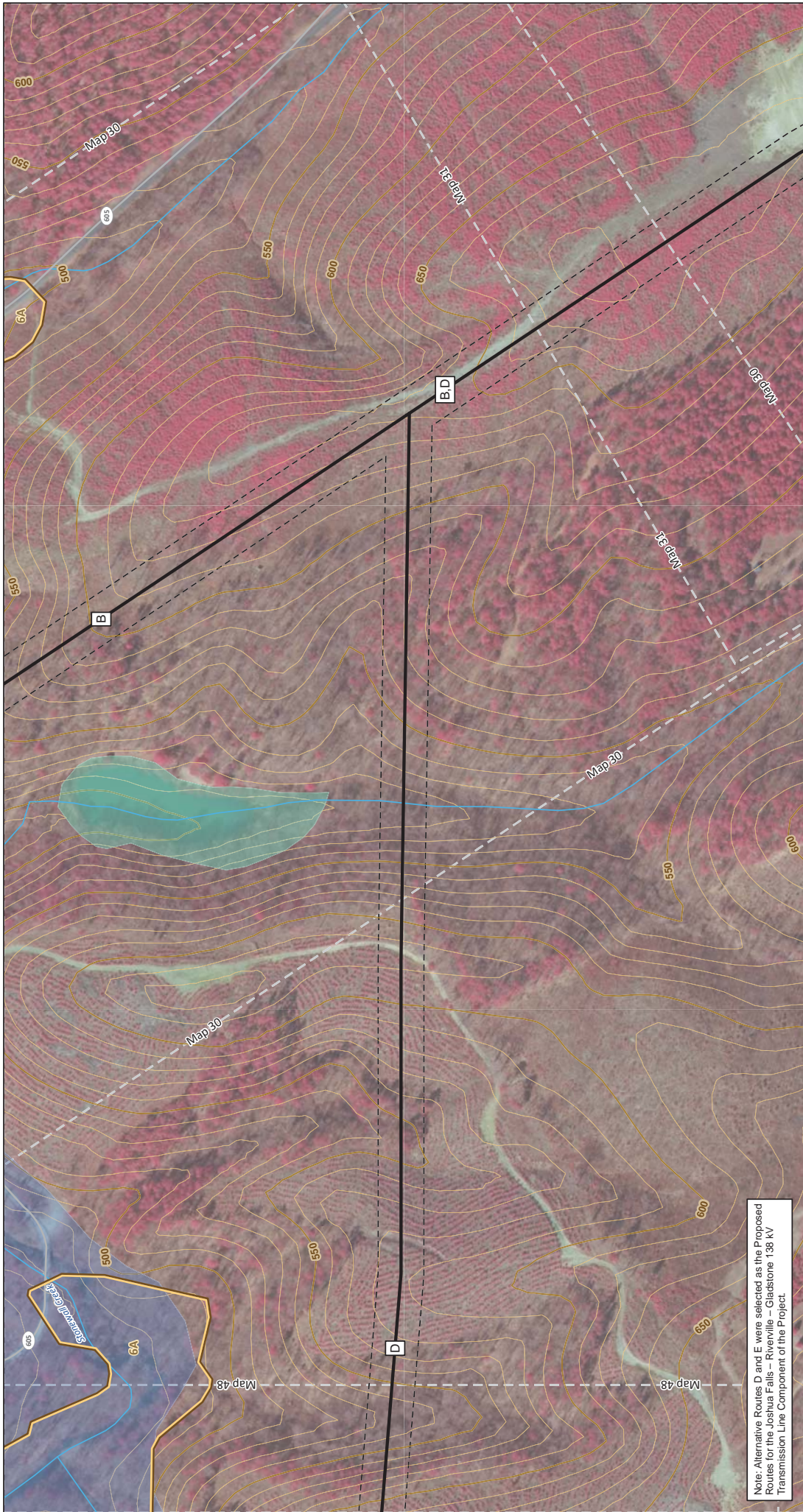
Map 48 of 53

Legend

- Alternative Routes
- Stream (NHD)
- High Probability Stream
- Low Probability Stream
- 100-year Floodplain
- Right-of-Way (100')
- Hydric Inclusion Soils
- Index Contour
- Intermediate Contour



Note: Alternative Routes D and E were selected as the Proposed Routes for the Joshua Falls - Riverville - Gladstone 138 kV Transmission Line Component of the Project.



Note: Alternative Routes D and E were selected as the Proposed Routes for the Joshua Falls - Riverville - Gladstone 138 kV Transmission Line Component of the Project.



- Alternative Routes
- Road/Highway
- Stream (NHD)
- Wetlands (NW1)
- 100-year Floodplain
- Right-of-Way (100')
- Map Title
- Hydric Inclusion Soils
- Index Contour
- Intermediate Contour



NAD 1983 StatePlane Virginia South FIPS 4502 Feet
Lambert Conformal Conic
North American 1983

Amherst, Appomattox, Campbell, & Nelson Counties, Virginia



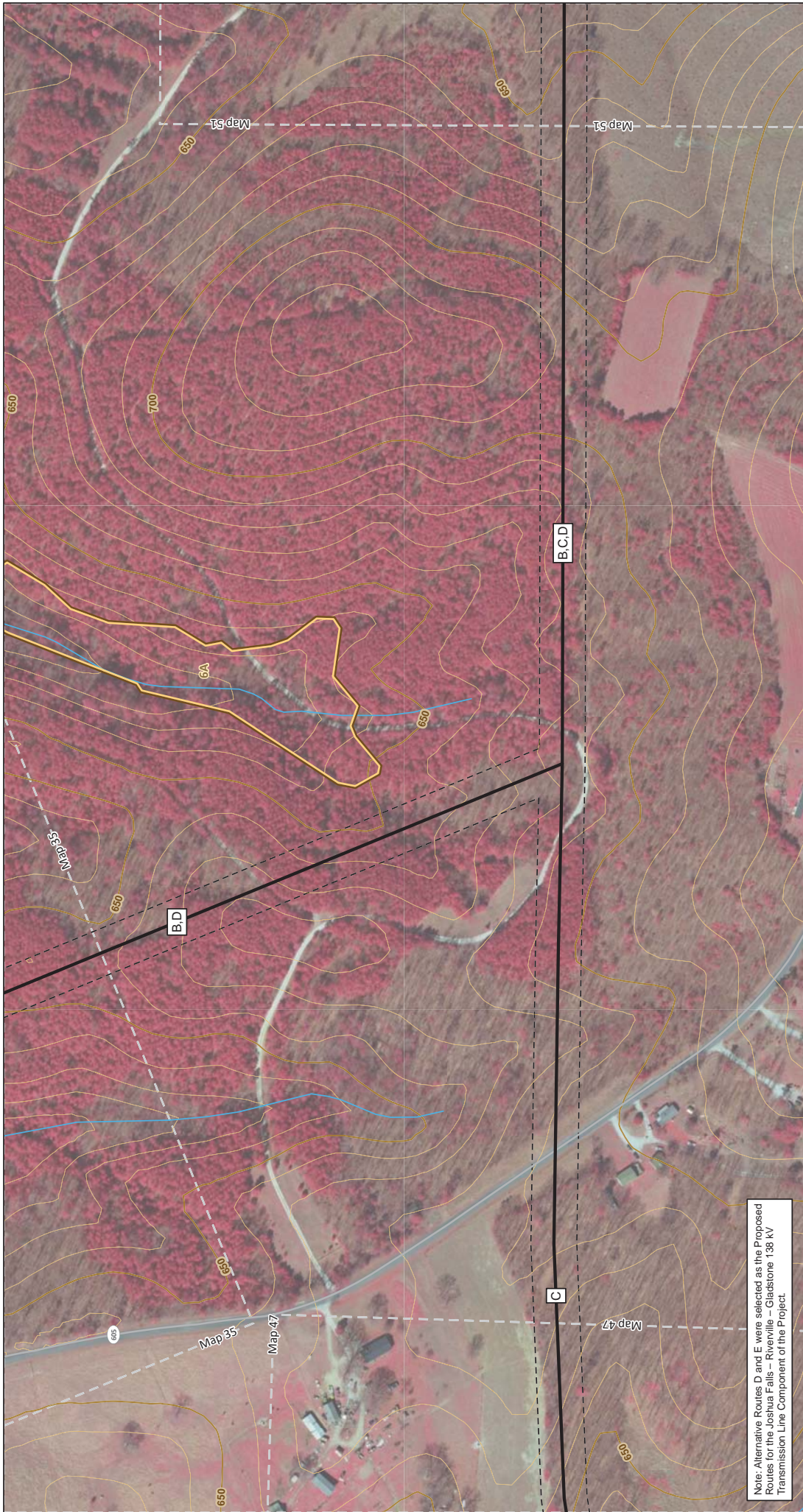
1" = 200'
Map 49 of 53

Desktop Wetland and Stream Delineation

Component 1: Joshua Falls-Riverville
138 kV Transmission Line

AP Power
#GOINGLESS THE FIGHT

Date: 1/27/2020
Imagery Layer Credit: Google Earth
Project: 15 5300_138K21



Note: Alternative Routes D and E were selected as the Proposed Routes for the Joshua Falls - Riverville - Gladstone 138 kV Transmission Line Component of the Project.

- Alternative Routes
- Road/Highway
- Stream (NHD)
- Right-of-Way (100')
- Map Title
- Hydric Inclusion Soils
- Index Contour
- Intermediate Contour



NAD 1983 StatePlane Virginia South FIPS 4502 Feet
Lambert Conformal Conic
North American 1983

Amherst, Appomattox, Campbell, & Nelson Counties, Virginia



1" = 200' Map 50 of 53

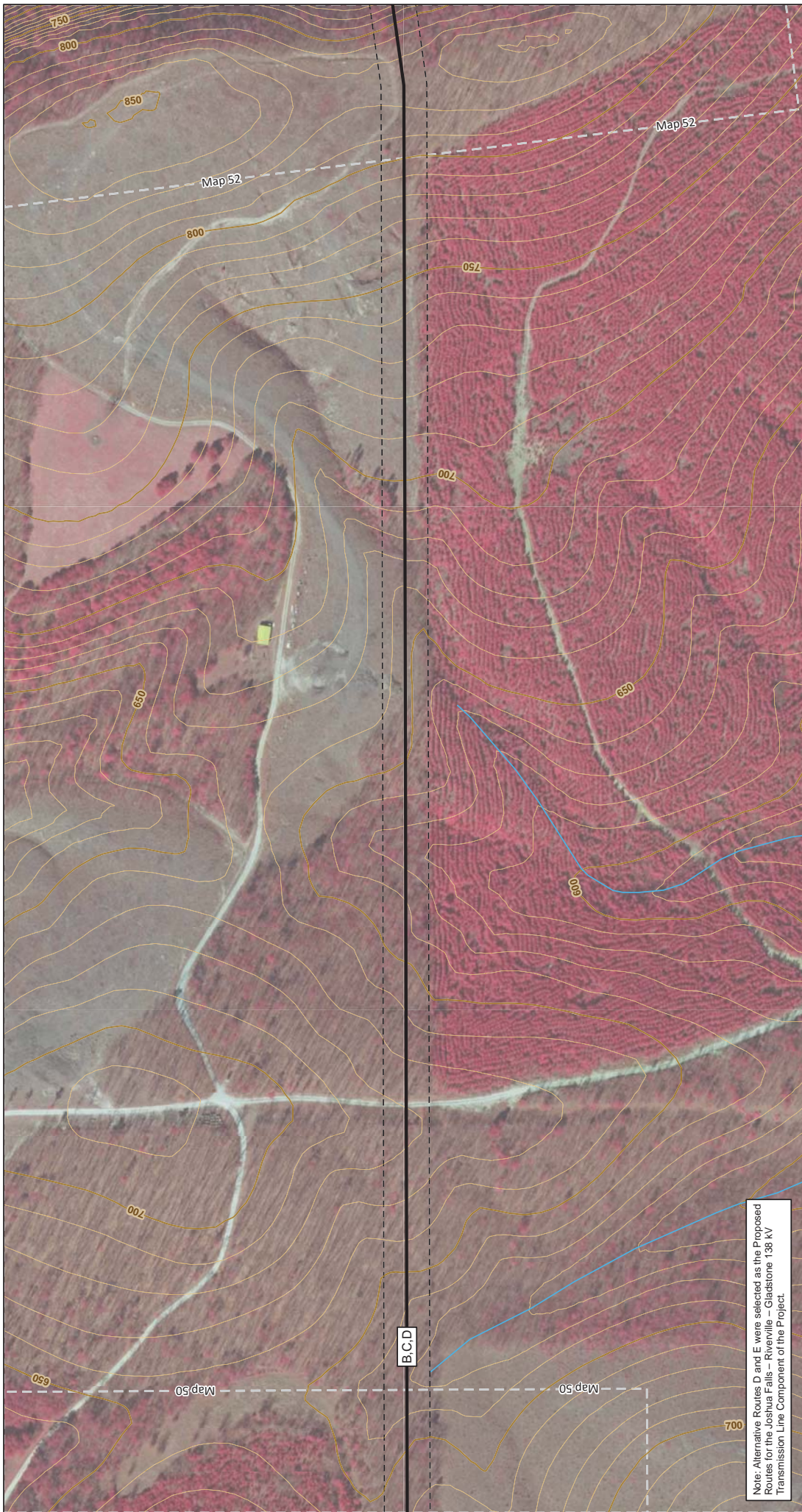
Desktop Wetland and Stream Delineation

Component 1: Joshua Falls-Riverville
138 kV Transmission Line



Date: 12/22/2020
Imagery Layer Credit:
Aerial Imagery
Project: 15 5303_135921

APPALACHIAN POWER
#FOUNDED1870



Note: Alternative Routes D and E were selected as the Proposed Routes for the Joshua Falls – Riverville – Gladstone 138 kV Transmission Line Component of the Project.

- Alternative Routes
- Stream (NHD)
- Right-of-Way (100')
- Map Title
- Index Contour
- Intermediate Contour



NAD 1983 StatePlane Virginia South FIPS 4502 Feet
Lambert Conformal Conic
North American 1983

Amherst, Appomattox, Campbell, & Nelson Counties, Virginia

0 100 200 400
Feet

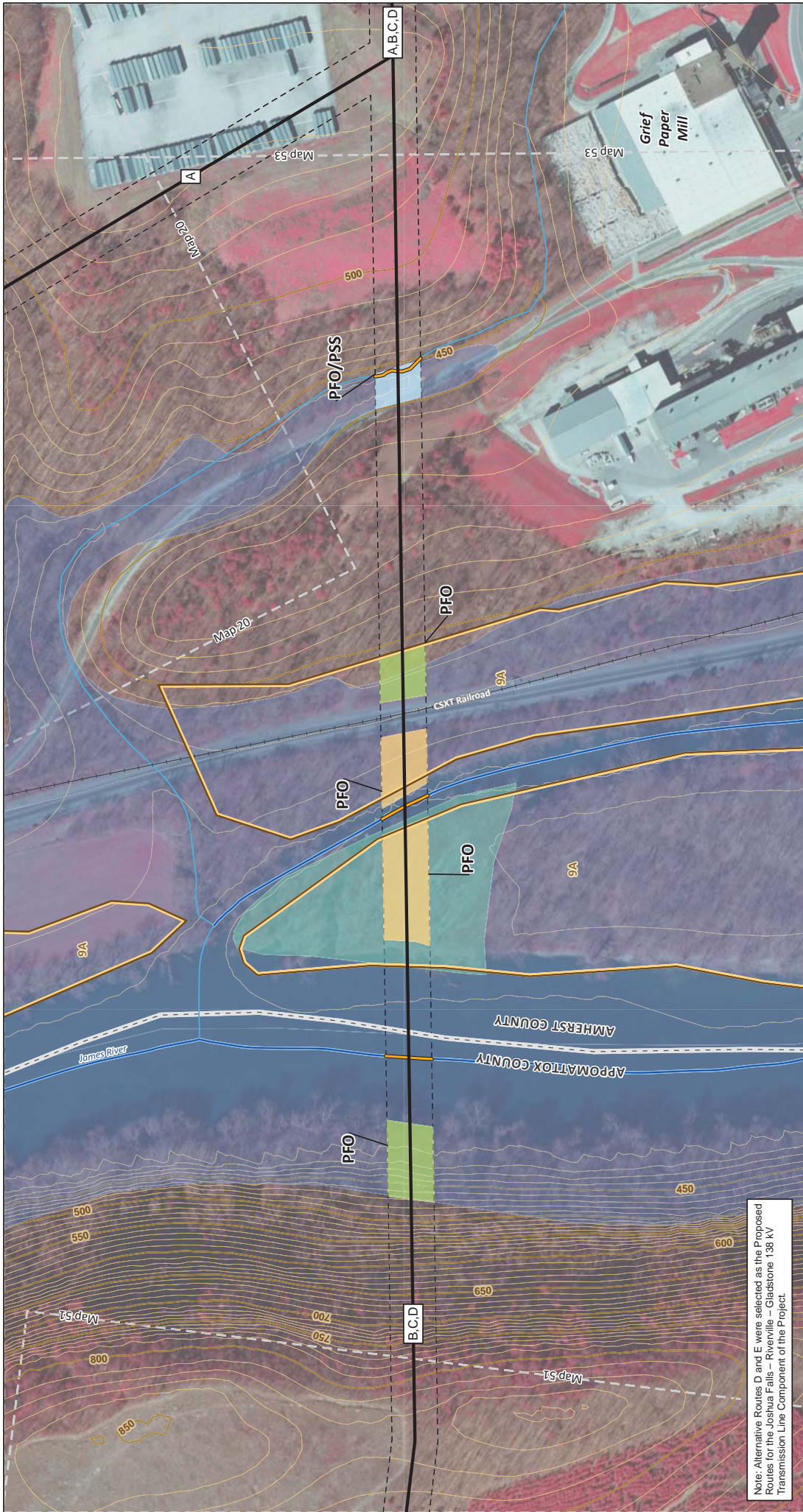
1" = 200' Map 51 of 53

Desktop Wetland and Stream Delineation

Component 1: Joshua Falls-Riverville
138 kV Transmission Line

AP Energy's Water Credits
#WATERFORGOOD
PROJECT 15 5303, 153521

Date: 12/2/2020
Project: 15 5303, 153521



Note: Alternative Routes D and E were selected as the Proposed Routes for the Joshua Falls - Riverville - Gladstone 138 kV Transmission Line Component of the Project.

Desktop Wetland and Stream Delineation

Component 1: Joshua Falls-Riverville
138 kV Transmission Line

Date: 12/22/2020
 Imagery Layer Credit: [Mapbox](#)
 Project: 15.5303.135921

APPALACHIAN POWER
 #FOOTPRINTS #ENERGY

North Arrow

Map 52 of 53

1" = 200'

Scale: 0 100 200 400 Feet

Map 53

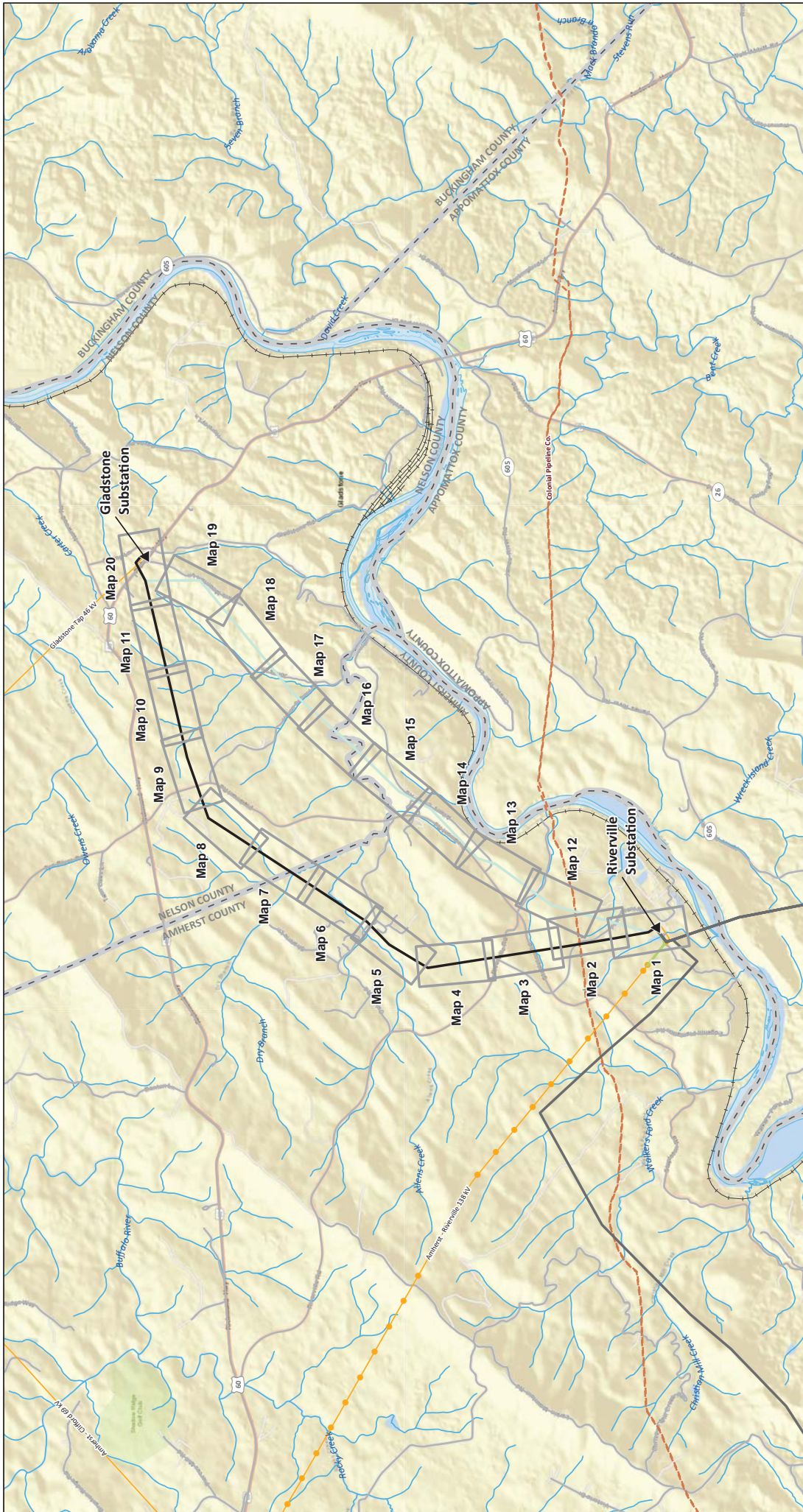
Map 20

Map 51

Alternative Routes	Stream (NHD)	100-year Floodplain
High Probability Stream	City/County Boundary	Right-of-Way (100')
Existing AEP Transmission Line (To Be Retired)	Wetland Probability - HIGH	Map Title
Road/Highway	Wetland Probability - MOD	Hydric Inclusion Soils
Railroad	Wetland Probability - LOW	Index Contour
James River	Wetlands (NWI)	Intermediate Contour



**ATTACHMENT B: DESKTOP MAPPING FOR GLADSTONE – RIVERVILLE ALTERNATIVE
ROUTES (E-F)**



Desktop Wetland and Stream Delineation

Riverville - Gladstone 138 kV Transmission Line Project Overview

Map Scale: 1" = 0.75 miles

North Arrow: [North Arrow Icon]

Scale Bar: 0 to 1.5 Miles

INDEX

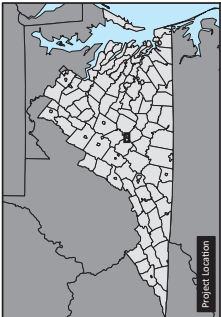
Metadata:
 MD 1983 StatePlane Virginia South EPS 4502 Feet
 Lambert Conformal Conic
 North American 1983

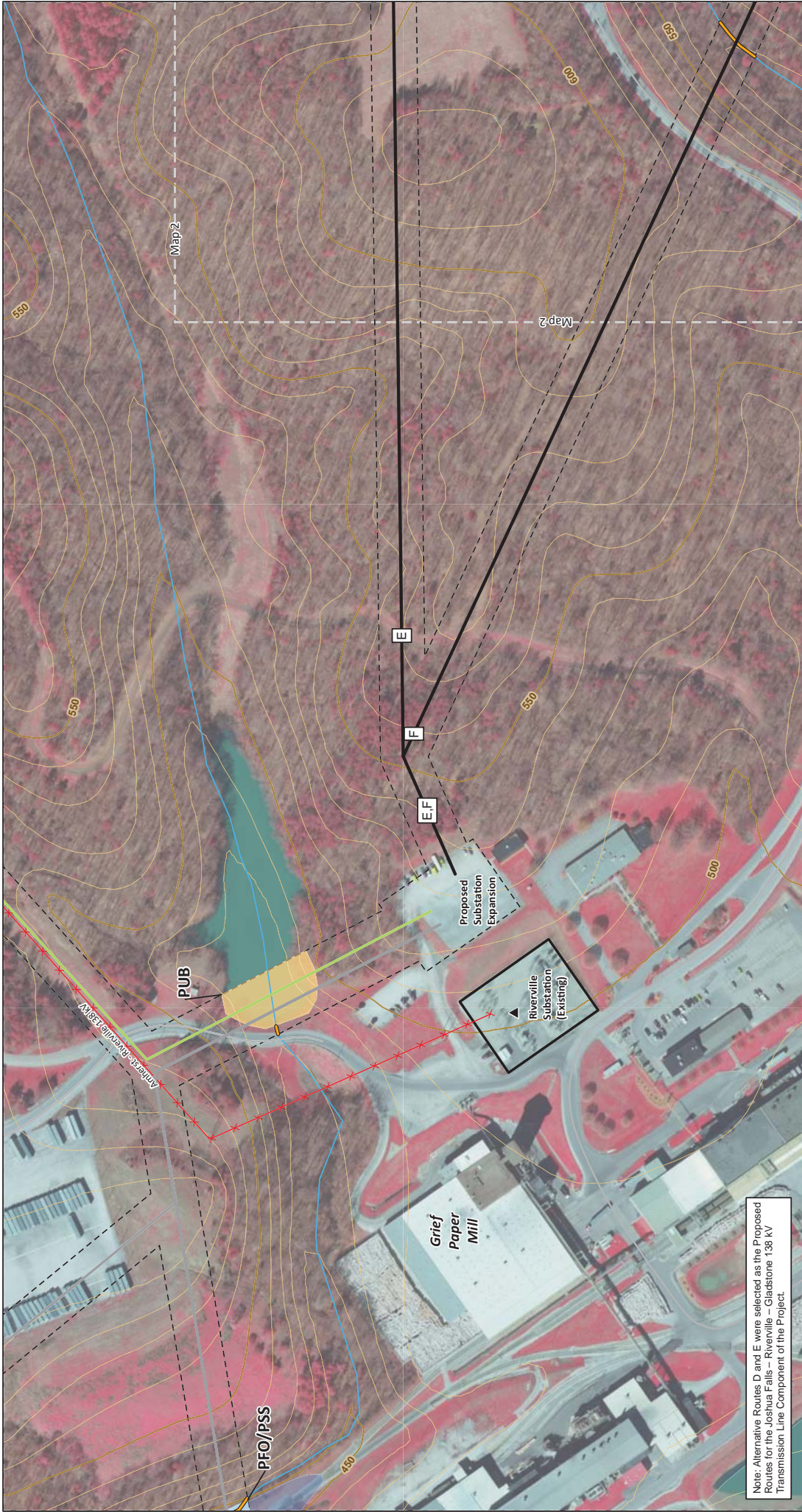
Project Information:
 Amherst, Appomattox, Campbell, & Nelson Counties, Virginia
 Date: 12/2/2020
 Project: 14027

Appalachian Power
 #FOUNDLESS ENERGY

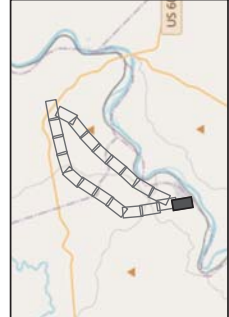
Image Layer Credit:
 INCUMBENT P. NCA, USGS

	Existing AEP Substation		Existing AEP Transmission Line (69 kV or lower)		Stream (NHD)
	Riverville - Gladstone Proposed Route		Existing AEP Transmission Line (115-230 kV)		City/County Boundary
	Riverville - Gladstone Alternative F		Natural Gas Pipeline		River (NHD)
	Joshua Falls - Riverville Alternative Routes		Road/Highway		Map Tile
	Amherst - Riverville 138 kV Transmission Line Relocation		Railroad		City/County Boundary (NO TOC)





Note: Alternative Routes D and E were selected as the Proposed Routes for the Joshua Falls - Riverville - Gladstone 138 kV Transmission Line Component of the Project.



- ▲ Existing AEP Substation
- Alternative Routes
- Amherst - Riverville 138 kV Rebuild
- Joshua Falls - Riverville Alternative Routes
- Existing AEP Transmission Line (To Be Retired)
- High Probability Stream
- Road/Highway
- Stream (NHD)
- Wetland Probability - HIGH
- Wetland Probability - LOW
- Wetlands (NW1)
- 100-year Floodplain
- - - Right-of-Way (100')
- ▭ Substation Fence
- ▭ Map Title
- Index Contour
- Intermediate Contour



NAD 1983 StatePlane Virginia South FIPS 4502 Feet
Lambert Conformal Conic
North American 1983

Amherst, Appomattox, Campbell, & Nelson Counties, Virginia



1" = 200'
Map 1 of 20

Desktop Wetland and Stream Delineation

Component 1: Riverville - Gladstone
138 kV Transmission Line



Date: 12/20/2020
Image Layer Credits:
Aerial Imagery: ESRI
Project: 15 5300_135921
APPALACHIAN POWER
#FOUNDED1879 #ENERGY



Note: Alternative Routes D and E were selected as the Proposed Routes for the Joshua Falls - Riverville - Gladstone 138 kV Transmission Line Component of the Project.

Desktop Wetland and Stream Delineation
 Component 1: Riverville - Gladstone
 138 kV Transmission Line

Date: 12/20/2020
 Imagery Layer Credit: [Aerial Imagery](#)
 Project: 15.5303.135521

APPALACHIAN POWER
 #FOUNDED1882 #WEPOWERVA

North Arrow

NAD 1983 StatePlane Virginia South FIPS 4502 Feet
 Lambert Conformal Conic
 North American 1983

Amherst, Appomattox, Campbell, & Nelson Counties, Virginia

0 100 200 400
 Feet

1" = 200'
 Map 2 of 20

Legend

- Alternative Routes
- Stream (NHD)
- High Probability Stream
- Road/Highway
- Map Tile
- Wetlands (NWI)
- Right-of-Way (100')
- Index Contour
- Intermediate Contour





Note: Alternative Routes D and E were selected as the Proposed Routes for the Joshua Falls – Riverville – Gladstone 138 kV Transmission Line Component of the Project.

Desktop Wetland and Stream Delineation
 Component 1: Riverville - Gladstone
 138 kV Transmission Line

APPALACHIAN POWER
 #FOUNDED1882 #GROWINGWITHPOWER

Date: 12/22/2020
 Imagery Layer Credit: [Aerial Imagery](#)
 Project: 15-1503_138K21

North Arrow

NAD 1983 StatePlane Virginia South FIPS 4502 Feet
 Lambert Conformal Conic
 North American 1983

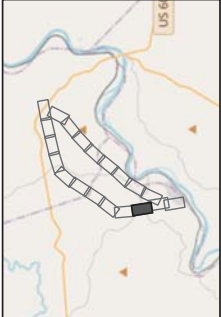
Amherst, Appomattox, Campbell, & Nelson Counties, Virginia

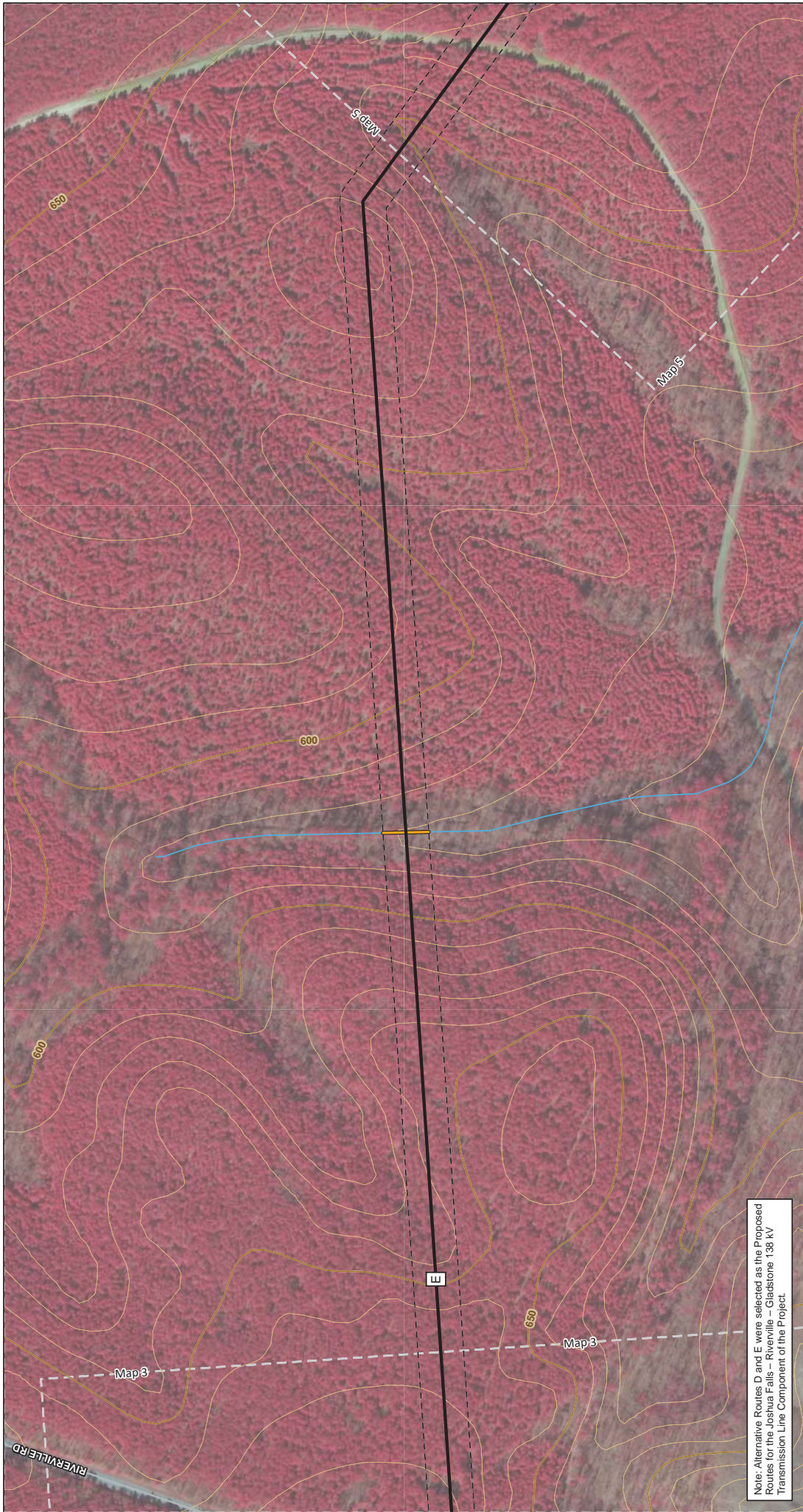
0 100 200 400
 Feet

1" = 200'
 Map 3 of 20

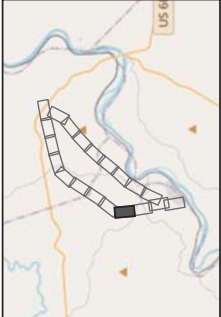
Legend:

- Alternative Routes
- High Probability Stream
- Road/Highway
- Stream (NHD)
- Right-of-Way (100')
- Map Title
- Index Contour
- Intermediate Contour





Note: Alternative Routes D and E were selected as the Proposed Routes for the Joshua Falls - Riverville - Gladstone 138 kV Transmission Line Component of the Project.



- Alternative Routes
- High Probability Stream
- Road/Highway
- Stream (NHD)
- Right-of-Way (100')
- Map Title
- Index Contour
- Intermediate Contour



NAD 1983 StatePlane Virginia South FIPS 4502 Feet
Lambert Conformal Conic
North American 1983

Amherst, Appomattox, Campbell, & Nelson Counties, Virginia



1" = 200'

Map 4 of 20

Desktop Wetland and Stream Delineation

Component 1: Riverville - Gladstone
138 kV Transmission Line



Date: 12/22/2020
Imagery Layer Credit:
Project: 15 1500_155921

Imagery Layer Credit:
Project: 15 1500_155921



Desktop Wetland and Stream Delineation

Component 1: Riverville - Gladstone
138 kV Transmission Line

APALACHIAN POWER
#GOINGLESS THE FIGHT

Date: 12/2/2020
Imagery Layer Credit: Aerial Imagery
Project: 15 5300_135521

North Arrow

NAD 1983 StatePlane Virginia South FIPS 4502 Feet
Lambert Conformal Conic
North American 1983

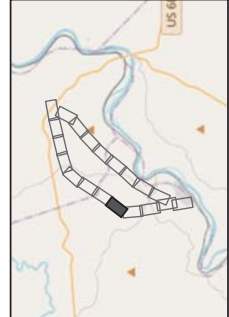
Amherst, Appomattox, Campbell, & Nelson Counties, Virginia

0 100 200 400 Feet

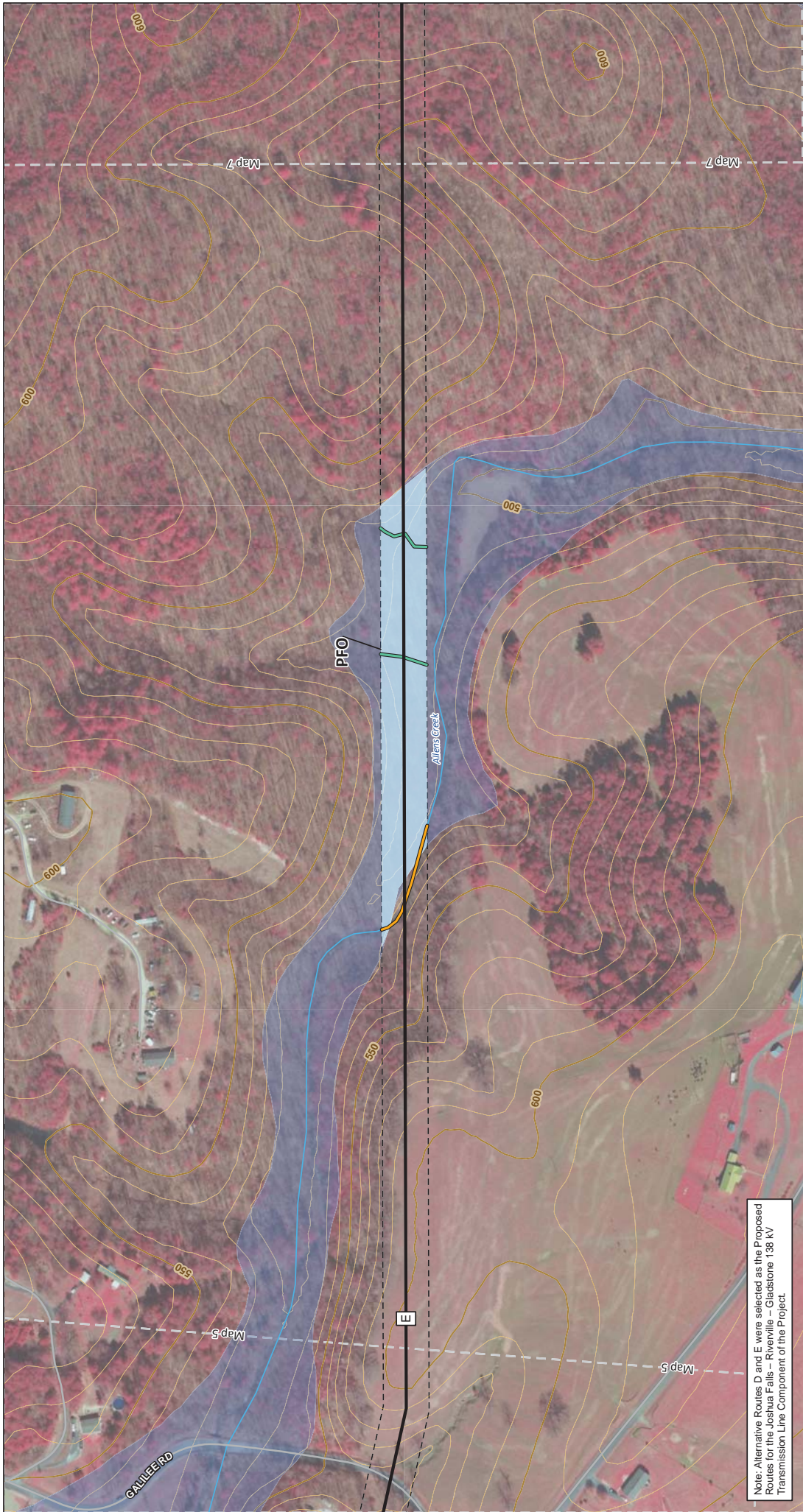
1" = 200'

Map 5 of 20

- Alternative Routes
- Road/Highway
- Stream (NHD)
- 100-year Floodplain
- Right-of-Way (100')
- Map Title
- Index Contour
- Intermediate Contour



Note: Alternative Routes D and E were selected as the Proposed Routes for the Joshua Falls - Riverville - Gladstone 138 kV Transmission Line Component of the Project.



Note: Alternative Routes D and E were selected as the Proposed Routes for the Joshua Falls - Riverville - Gladstone 138 kV Transmission Line Component of the Project.

Desktop Wetland and Stream Delineation
 Component 1: Riverville - Gladstone
 138 kV Transmission Line

Date: 12/20/2020
 Imagery Source: Google Earth
 Project: 15-0300_138K21

APPALACHIAN POWER
 #GOINGGREEN #WE4G

North Arrow

NAD 1983 StatePlane Virginia South FIPS 4502 Feet
 Lambert Conformal Conic
 North American 1983

Amherst, Appomattox, Campbell, & Nelson Counties, Virginia

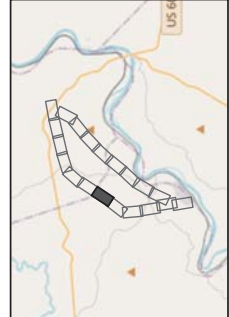
0 100 200 400
 Feet

1" = 200'

Map 6 of 20

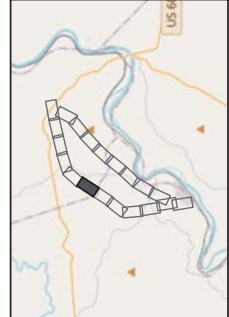
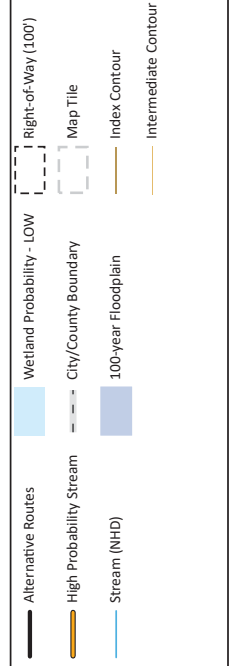
Legend

- Alternative Routes
- High Probability Stream
- Moderate Probability Stream
- Road/Highway
- Stream (NHD)
- Wetland Probability - LOW
- 100-year Floodplain
- Right-of-Way (100')
- Map Tile
- Index Contour
- Intermediate Contour





Note: Alternative Routes D and E were selected as the Proposed Routes for the Joshua Falls – Riverville – Gladstone 138 kV Transmission Line Component of the Project.



Desktop Wetland and Stream Delineation

Component 1: Riverville - Gladstone
138 kV Transmission Line

APPALACHIAN POWER
#FOUNDED1858 #WEPOWERVA

Date: 12/2/2020
Image Layer Credit: Esri
Project: 15-1503_138kV

NAD 1983 StatePlane Virginia South FIPS 4502 Feet
Lambert Conformal Conic
North American 1983

Amherst, Appomattox, Campbell, & Nelson Counties, Virginia

Map 7 of 20








1" = 200'

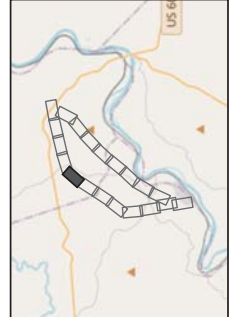
0 100 200 400
Feet

Map 7 of 20



Note: Alternative Routes D and E were selected as the Proposed Routes for the Joshua Falls – Riverville – Gladstone 138 kV Transmission Line Component of the Project.

-  Alternative Routes
-  High Probability Stream
-  Stream (NHD)
-  Right-of-Way (100')
-  Map Title
-  Intermediate Contour
-  Index Contour



NAD 1983 StatePlane Virginia South FIPS 4502 Feet
Lambert Conformal Conic
North American 1983

Amherst, Appomattox, Campbell, & Nelson Counties, Virginia



1" = 200'

Map 8 of 20

Desktop Wetland and Stream Delineation

Component 1: Riverville - Gladstone
138 kV Transmission Line



APPALACHIAN POWER

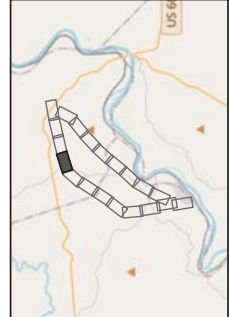
#FOUNDED 1880

#UNPLEASANT

Date: 12/20/2020
Image Layer Credit: [Mapbox](#)
Project: 15 1500_153521
C:\Users\j... \AppData\Local\Temp\153521.aprx



Note: Alternative Routes D and E were selected as the Proposed Routes for the Joshua Falls - Riverville - Gladstone 138 kV Transmission Line Component of the Project.



- Alternative Routes
- High Probability Stream
- Road/Highway
- Stream (NHD)
- Wetland Probability - MOD
- Right-of-Way (100')
- Map Title
- Index Contour
- Intermediate Contour



NAD 1983 StatePlane Virginia South FIPS 4502 Feet
Lambert Conformal Conic
North American 1983

Amherst, Appomattox, Campbell, & Nelson Counties, Virginia



1" = 200'

Map 9 of 20

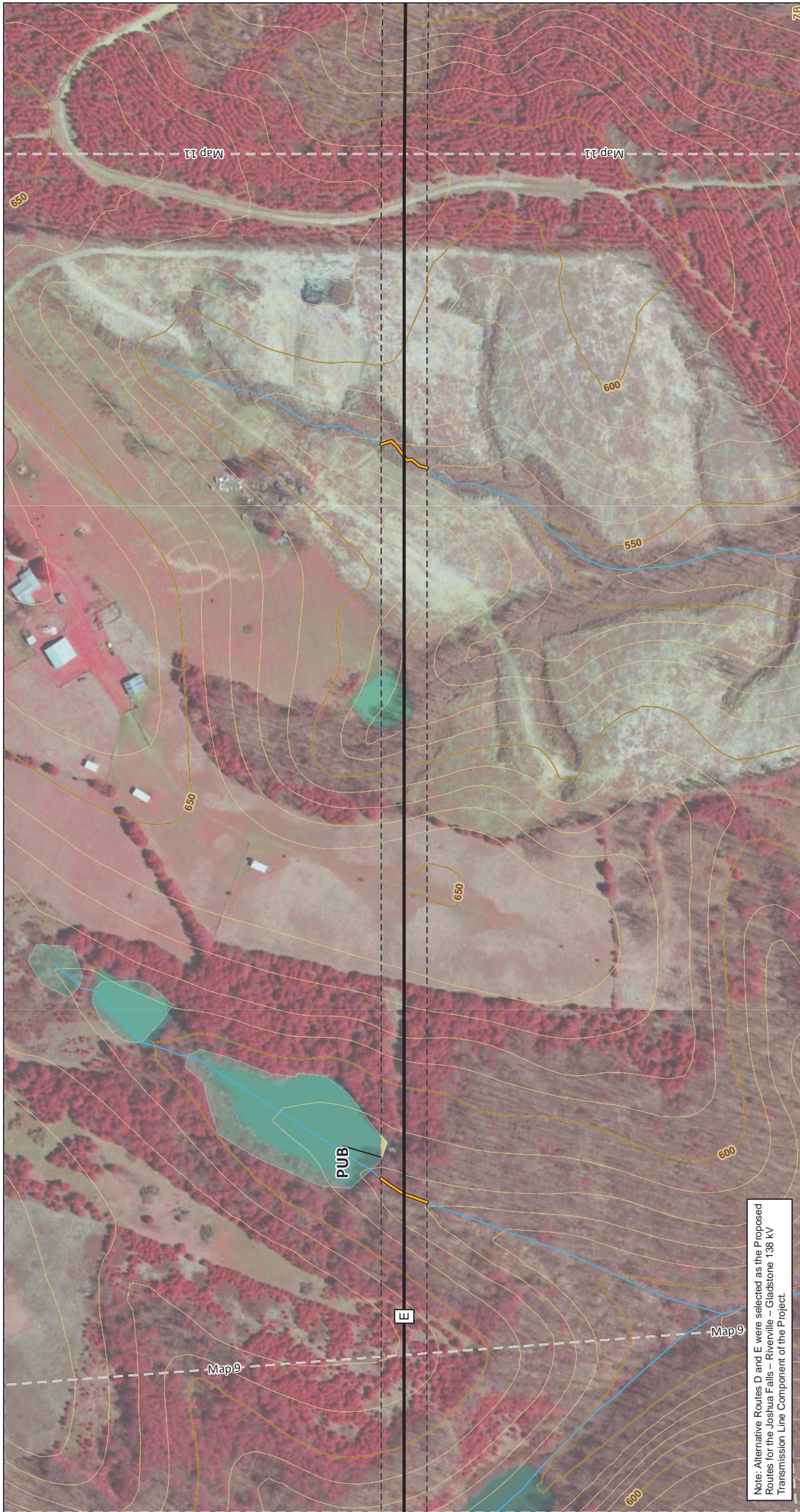
Desktop Wetland and Stream Delineation

Component 1: Riverville - Gladstone
138 kV Transmission Line



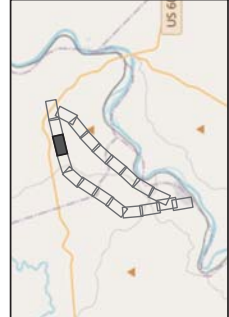
Date: 12/2/2020
Imagery Layer Credit:
Aerial Imagery
Project: 15 5303_135521

#GRIFFINLESS ENERGY
APPALACHIAN POWER



Note: Alternative Routes D and E were selected as the Proposed Routes for the Joshua Falls - Riverville - Gladstone 138 kV Transmission Line Component of the Project.

- Alternative Routes
- High Probability Stream
- Stream (NHD)
- Wetland Probability - HIGH
- Hydric Inclusion Soils
- Wetlands (NWI)
- Right-of-Way (100')
- Map Tile
- Index Contour
- Intermediate Contour



NAD 1983 StatePlane Virginia South FIPS 4502 Feet
Lambert Conformal Conic
North American 1983

Amherst, Appomattox, Campbell, & Nelson Counties, Virginia



1" = 200'

Map 10 of 20

Desktop Wetland and Stream Delineation

Component 1: Riverville - Gladstone
138 kV Transmission Line

AP Power
#GOINGLESSISFINEGP®
Date: 12/20/2020
 imagery Layer Credits:
 Project: 15 1500_153521
 Contour Line Style:



Note: Alternative Routes D and E were selected as the Proposed Routes for the Joshua Falls - Riverville - Gladstone 138 kV Transmission Line Component of the Project.

Desktop Wetland and Stream Delineation
 Component 1: Riverville - Gladstone
 138 kV Transmission Line

APPALACHIAN POWER
 #FOUNDED1882 #UNPLEASANTVILLE

Date: 12/22/2020
 Imagery Layer Credit: Aerial Imagery
 Project: 15 1500_155521

North Arrow

NAD 1983 StatePlane Virginia South FIPS 4502 Feet
 Lambert Conformal Conic
 North American 1983

Amherst, Appomattox, Campbell, & Nelson Counties, Virginia

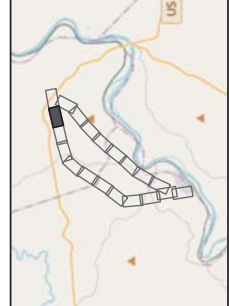
0 100 200 400
 Feet

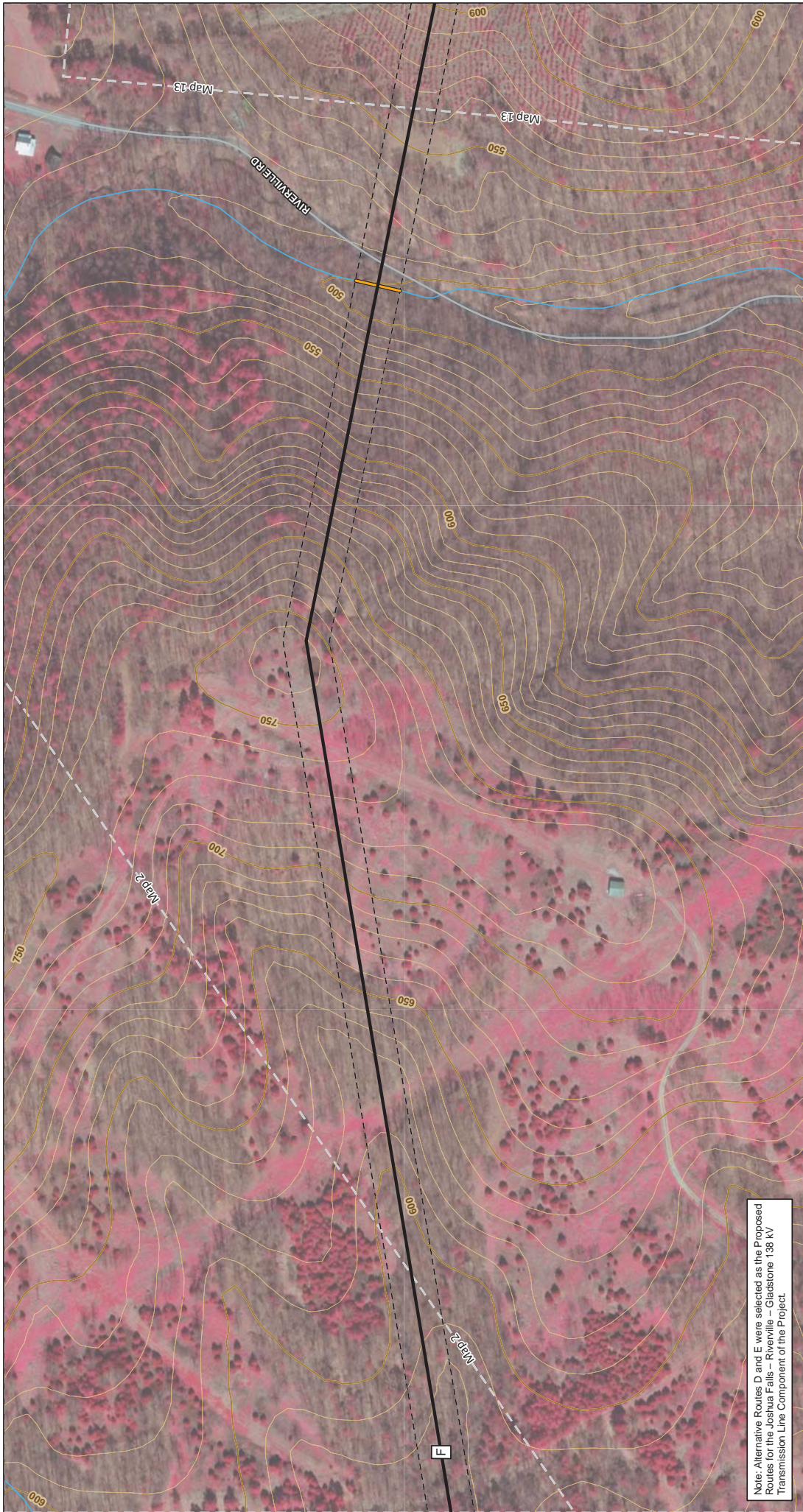
1" = 200'

Map 11 of 20

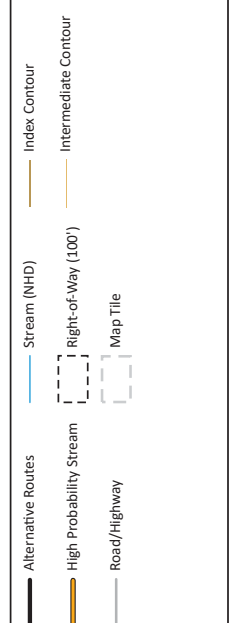
Legend:

- Alternative Routes
- High Probability Stream
- Stream (NHD)
- Hydric Inclusion Soils
- Right-of-Way (100')
- Map Title
- Index Contour
- Intermediate Contour





Note: Alternative Routes D and E were selected as the Proposed Routes for the Joshua Falls – Riverville – Gladstone 138 kV Transmission Line Component of the Project.



NAD 1983 StatePlane Virginia South FIPS 4502 Feet
Lambert Conformal Conic
North American 1983

Amherst, Appomattox, Campbell, & Nelson Counties, Virginia



1" = 200'

Map 12 of 20

Desktop Wetland and Stream Delineation

Component 1: Riverville - Gladstone 138 kV Transmission Line

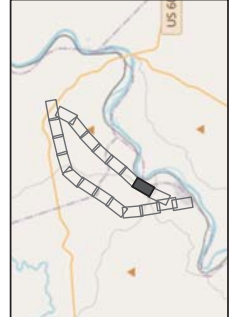


Date: 12/22/2020
 Imagery Layer Credit: [Aerial Imagery](#)
 Project: 15 1500_155521
 Copyright © 2020



Note: Alternative Routes D and E were selected as the Proposed Routes for the Joshua Falls - Riverville - Gladstone 138 kV Transmission Line Component of the Project.

- Alternative Routes
- Road/Highway
- Railroad
- Hydric Inclusion Soils
- 100-year Floodplain
- Right-of-Way (100')
- Map Title
- Index Contour
- Intermediate Contour



NAD 1983 StatePlane Virginia South FIPS 4502 Feet
Lambert Conformal Conic
North American 1983

Amherst, Appomattox, Campbell, & Nelson Counties, Virginia



1" = 200'

Map 13 of 20

Desktop Wetland and Stream Delineation

Component 1: Riverville - Gladstone
138 kV Transmission Line

APPALACHIAN POWER

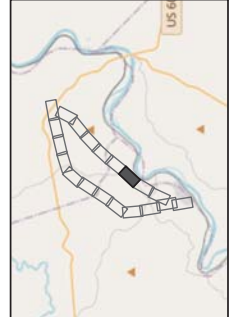
AMHERST, VIRGINIA

#APPALACHIANPOWER

Date: 12/22/2020
Image Layer Credit: [Mapbox](#)
Project: 15.500.135521
C:\Users\j... \AppData\Local\Temp\15500_135521.aprx



Note: Alternative Routes D and E were selected as the Proposed Routes for the Joshua Falls - Riverville - Gladstone 138 kV Transmission Line Component of the Project.



- Alternative Routes
- Stream (NHD)
- Road/Highway
- Railroad
- Hydric Inclusion Soils
- Wetlands (NWI)
- Right-of-Way (100')
- Map Title
- Index Contour
- Intermediate Contour



NAD 1983 StatePlane Virginia South FIPS 4502 Feet
Lambert Conformal Conic
North American 1983

Amherst, Appomattox, Campbell, & Nelson Counties, Virginia



1" = 200'

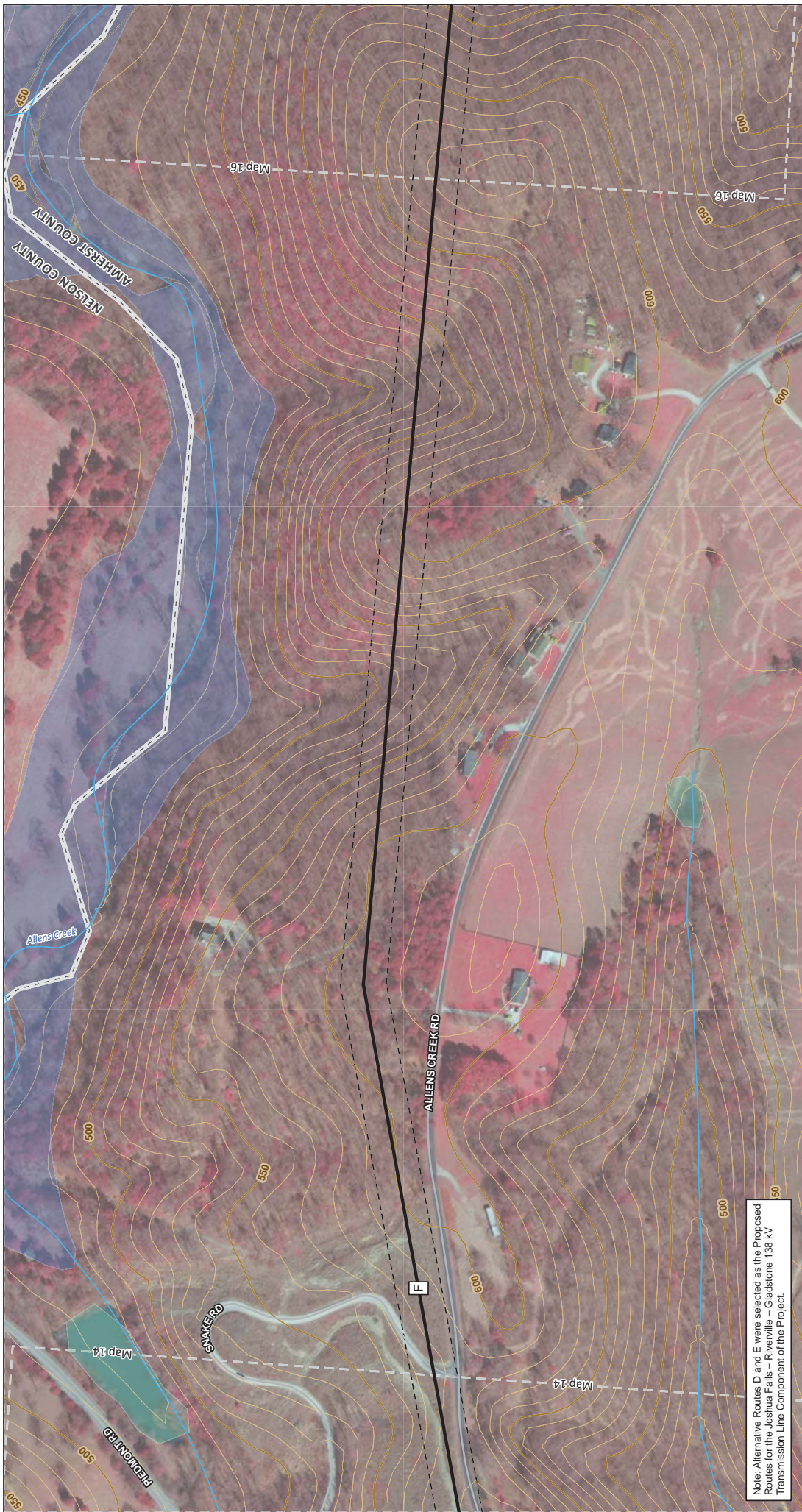
Map 14 of 20

Desktop Wetland and Stream Delineation

Component 1: Riverville - Gladstone
138 kV Transmission Line



Date: 12/22/2020
Imagery Layer Credit: [Mapbox](#)
Project: 15-1503_155521
#APPALACHIANPOWER #GOINGLESSISBETTER



Note: Alternative Routes D and E were selected as the Proposed Routes for the Joshua Falls – Riverville – Gladstone 138 kV Transmission Line Component of the Project.

- Alternative Routes
- Road/Highway
- Stream (NHD)
- City/County Boundary
- Wetlands (NW1)
- 100-year Floodplain
- Right-of-Way (100')
- Map Tile
- Index Contour
- Intermediate Contour



NAD 1983 StatePlane Virginia South FIPS 4502 Feet
Lambert Conformal Conic
North American 1983

Amherst, Appomattox, Campbell, & Nelson Counties, Virginia



1" = 200'
Map 15 of 20

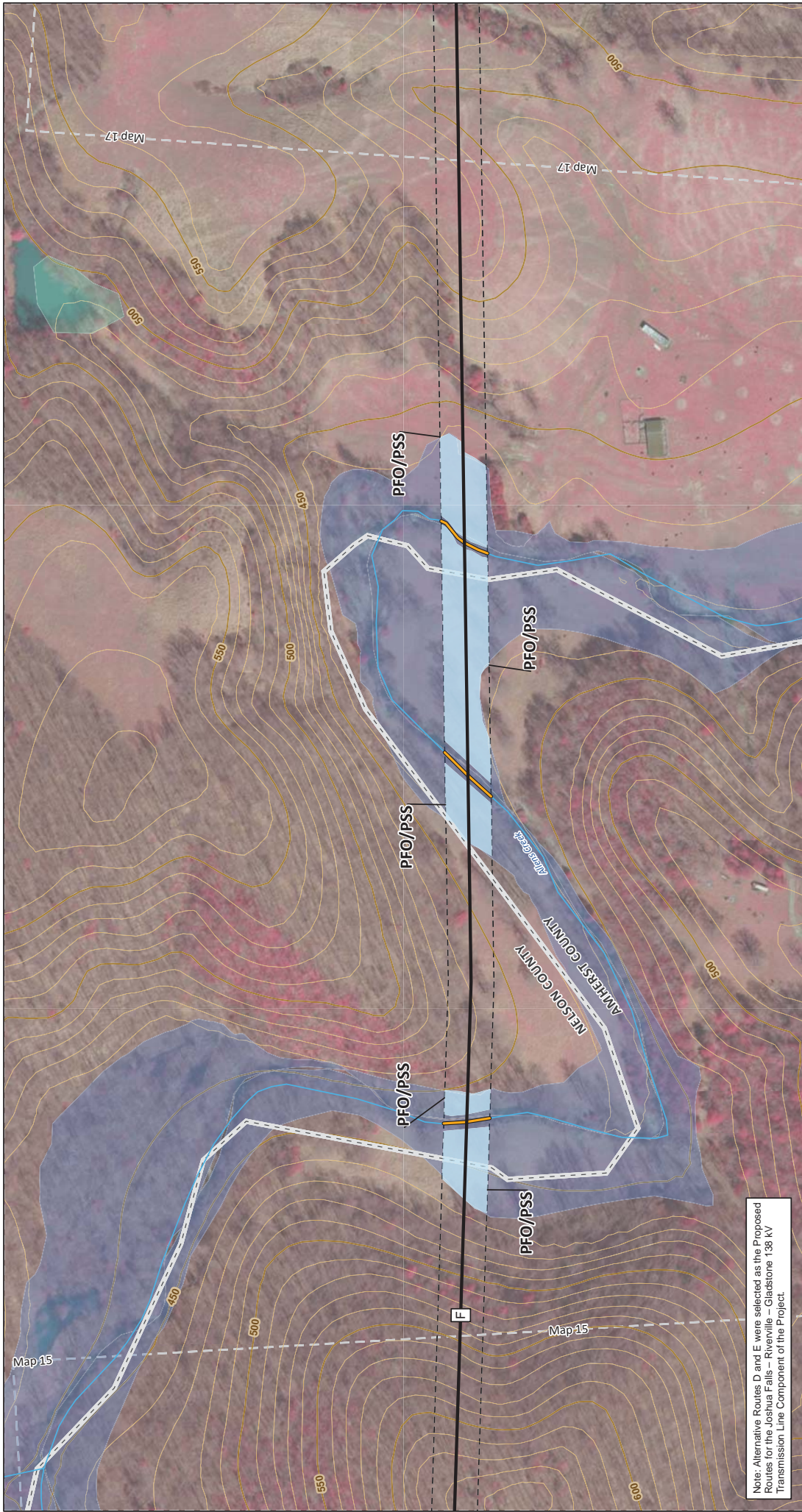
Desktop Wetland and Stream Delineation

Component 1: Riverville - Gladstone
138 kV Transmission Line

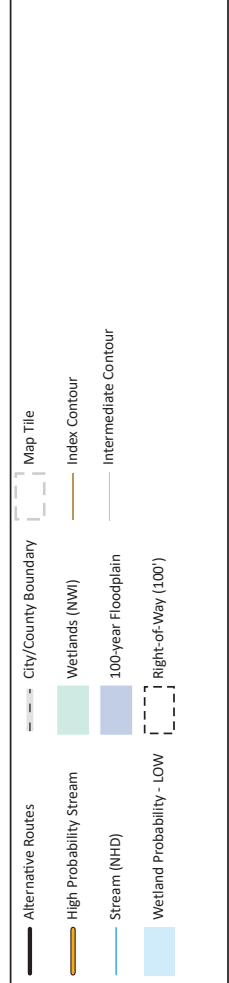



Date: 12/22/2020
Map Scale: 1" = 200'
Project: 15-1500-135521

imagery & data credit: [Esri](#)
 contour data credit: [USGS](#)



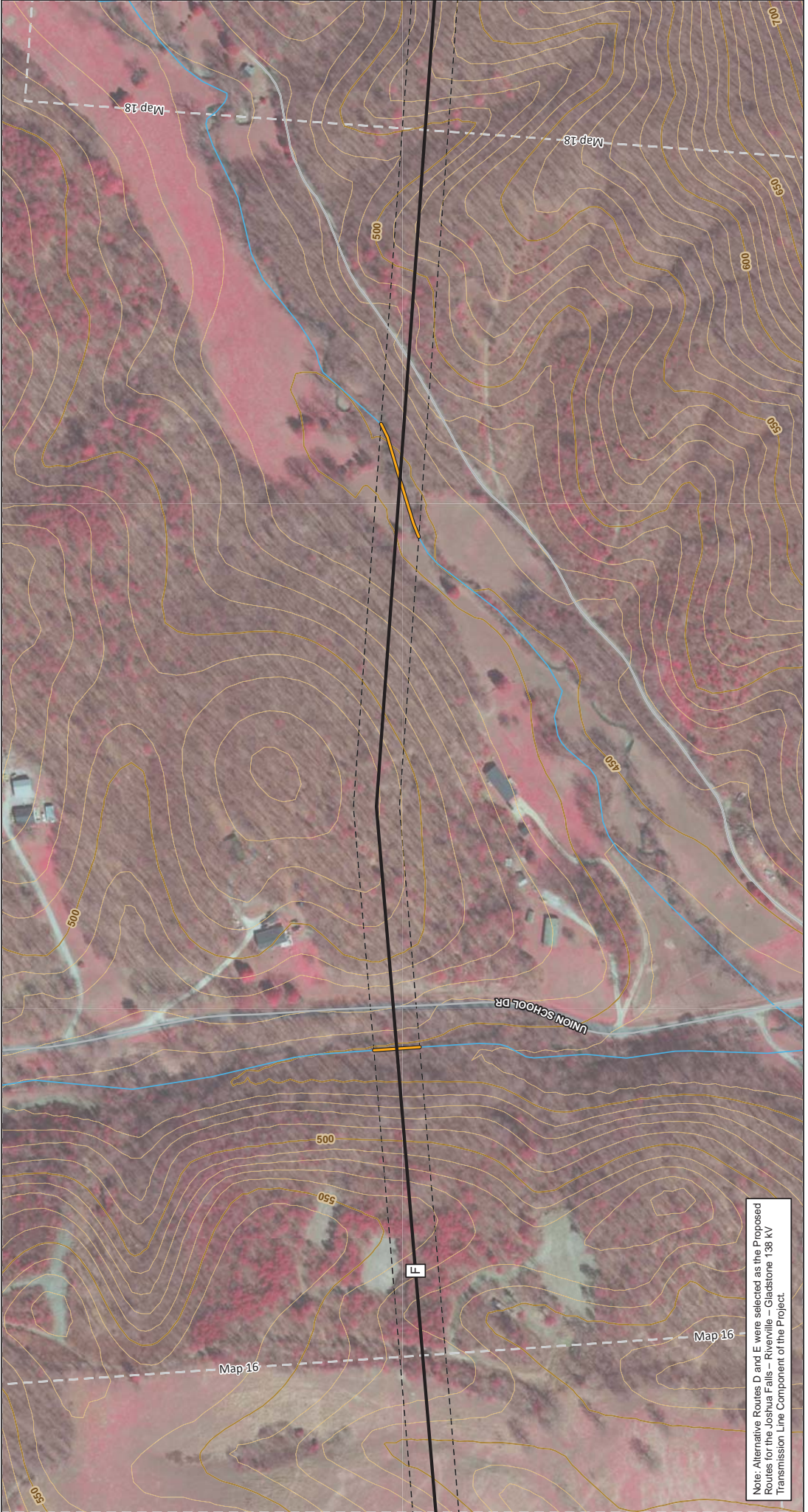
Note: Alternative Routes D and E were selected as the Proposed Routes for the Joshua Falls - Riverville - Gladstone 138 kV Transmission Line Component of the Project.



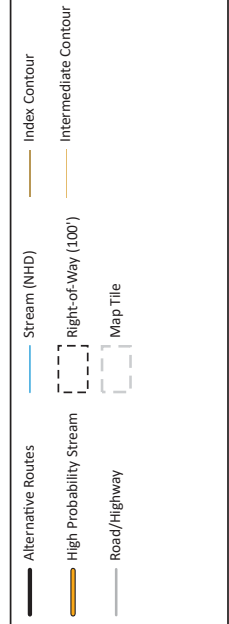
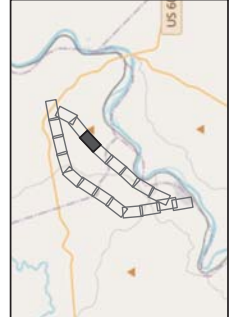

 NAD 1983 StatePlane Virginia South FIPS 4502 Feet
 Lambert Conformal Conic
 North American 1983
 Amherst, Appomattox, Campbell, & Nelson Counties, Virginia
 1" = 200'
 Map 16 of 20

Desktop Wetland and Stream Delineation
 Component 1: Riverville - Gladstone 138 kV Transmission Line

 Date: 12/22/2020
 Imagery Layer Credit: Google Earth
 Project: 15-2000-135921



Note: Alternative Routes D and E were selected as the Proposed Routes for the Joshua Falls – Riverville – Gladstone 138 kV Transmission Line Component of the Project.



NAD 1983 StatePlane Virginia South FIPS 4502 Feet
Lambert Conformal Conic
North American 1983

Amherst, Appomattox, Campbell, & Nelson Counties, Virginia



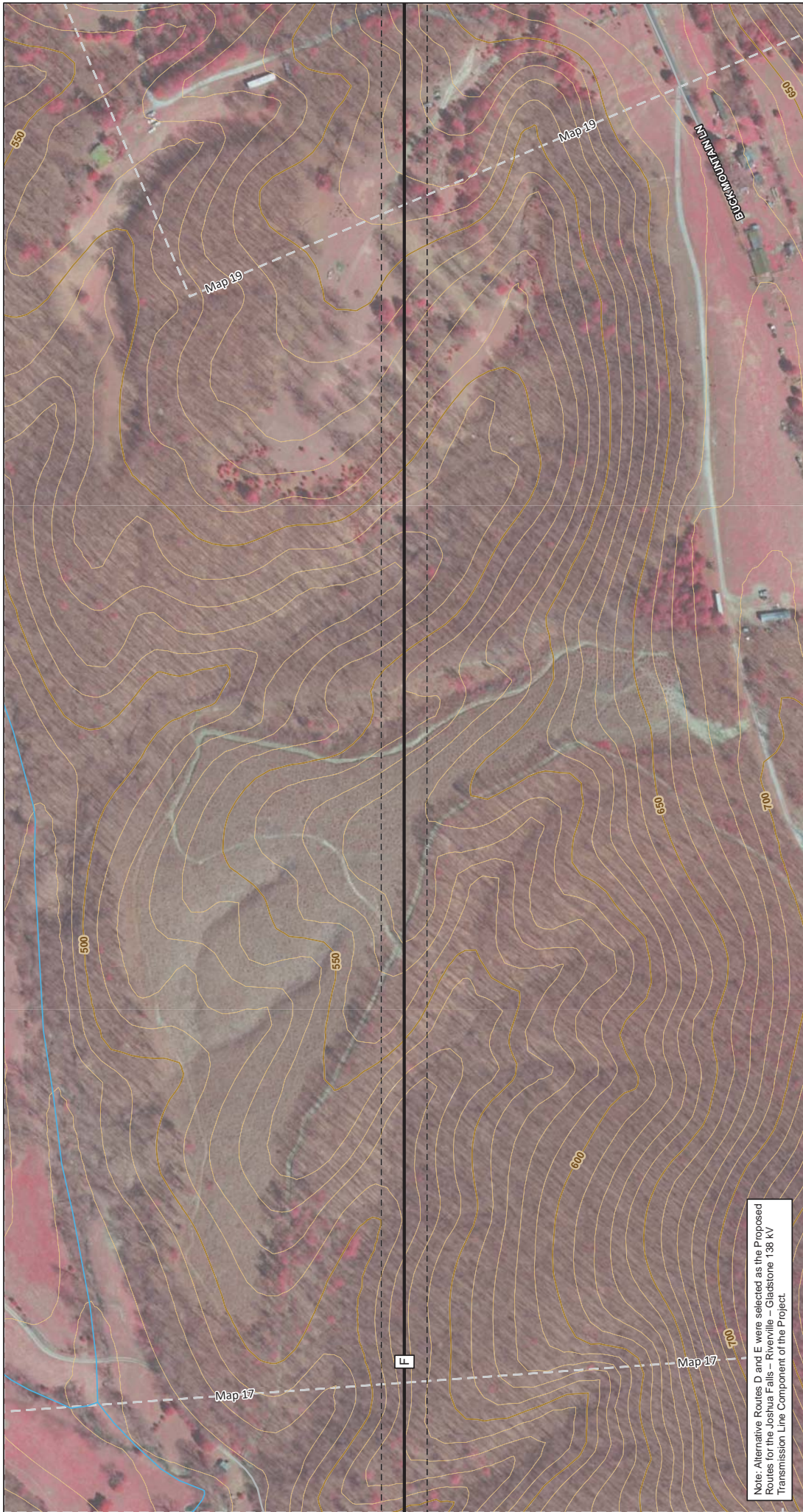
1" = 200' Map 17 of 20

Desktop Wetland and Stream Delineation

Component 1: Riverville - Gladstone
138 kV Transmission Line

Date: 12/2/2020;
Imagery Layer Credit:
Aerial Imagery from:
PROJECT: 15 5300_133521

APPALACHIAN POWER
#FOUNDED1916 #WE4G



Note: Alternative Routes D and E were selected as the Proposed Routes for the Joshua Falls – Riverville – Gladstone 138 kV Transmission Line Component of the Project.

- Alternative Routes
- Road/Highway
- Stream (NHD)
- Right-of-Way (100')
- Map Tile
- Index Contour
- Intermediate Contour



NAD 1983 StatePlane Virginia South FIPS 4502 Feet
Lambert Conformal Conic
North American 1983

Amherst, Appomattox, Campbell, & Nelson Counties, Virginia



1" = 200'

Map 18 of 20

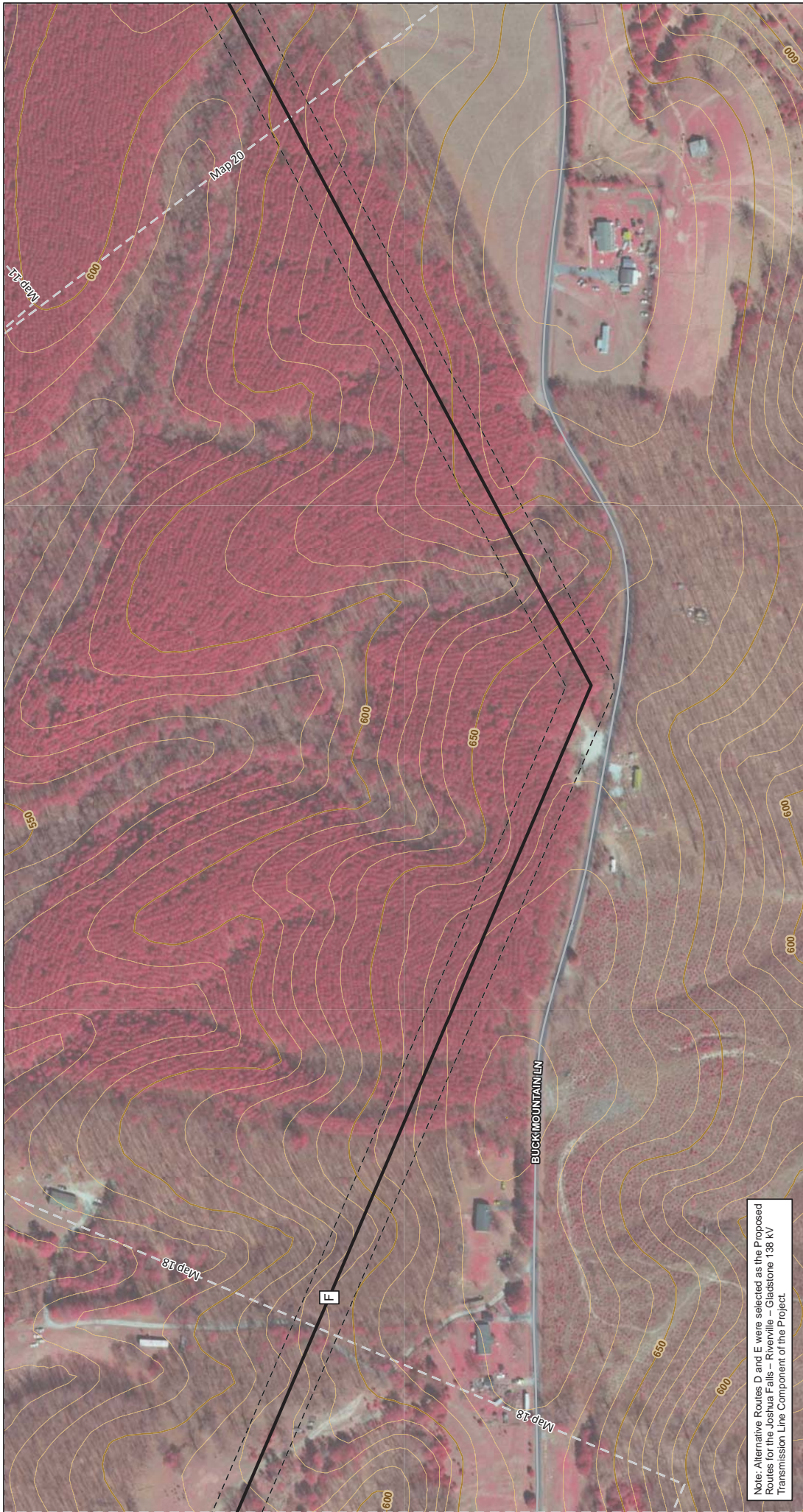
Desktop Wetland and Stream Delineation

Component 1: Riverville - Gladstone
138 kV Transmission Line



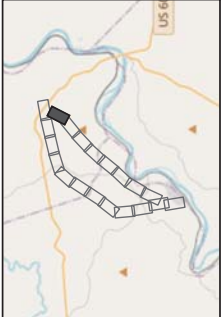
Date: 12/2/2020
Image Layer Credit: ESRI
Project: 15 1503_155521

Image Layer Credit: ESRI
Project: 15 1503_155521



Note: Alternative Routes D and E were selected as the Proposed Routes for the Joshua Falls - Riverville - Gladstone 138 kV Transmission Line Component of the Project.

- Alternative Routes
- Road/Highway
- Right-of-Way (100')
- Map Title
- Index Contour
- Intermediate Contour



NAD 1983 StatePlane Virginia South FIPS 4502 Feet
Lambert Conformal Conic
North American 1983

Amherst, Appomattox, Campbell, & Nelson Counties, Virginia



1" = 200'

Map 19 of 20

Desktop Wetland and Stream Delineation

Component 1: Riverville - Gladstone
138 kV Transmission Line



Date: 12/2/2020
Image Layer Credit:
Project: 15 5303_135521

Image Layer Credit:
Project: 15 5303_135521

